

2019 年度重点企业土壤和地下水环境 自行监测开展情况报告



报告企业（盖章）：无锡华润上华科技有限公司

二零一九年十一月十四日

1

2018 5
2018 6 2018 8
2018
2019

2

2.1

“ ” 2002 7
“ ” 2004 3 3
2004 177
“ ”

0.25 60000 / 8
3 [2008]1 2008
3 / 2010
3 / 2016 12

2.2

“ ”



4.5 /

1.5 /

2.3

1

HCl

NO_x

9

4

6

20 33.5

2

1

2.4

2

pH

CaCO₃

N

N

Na⁺

3

1

1

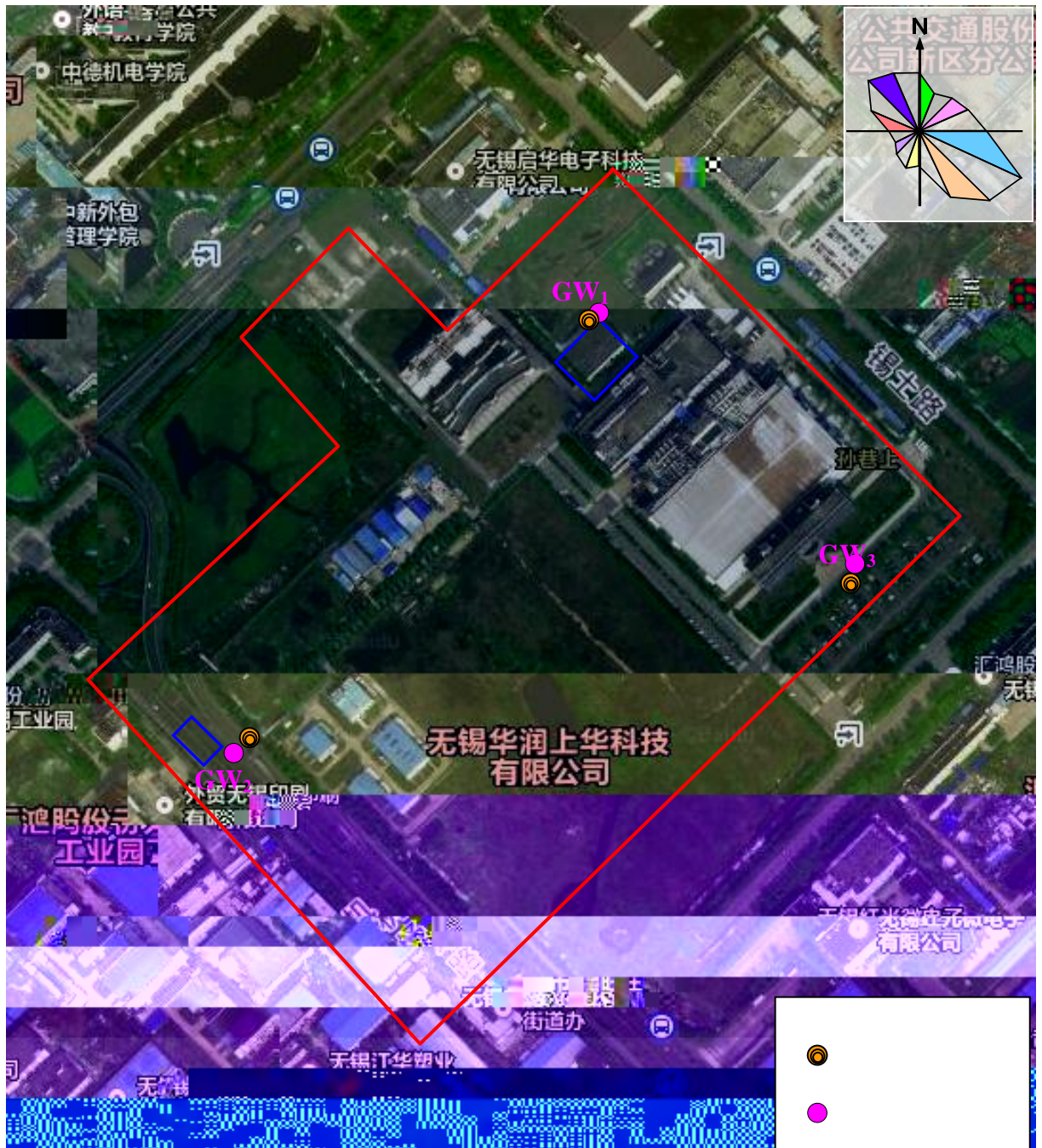
4

3m

3m

0.5m

HJ/T164



4

4.1

2019

A2180120470106CH

A2180120470106CC

4-1

pH	2 pH NY/T 1121.2-2006
	/ / 1 :
	GB/T22105.1-2008
	GB/T 22104-2008
	/ / 2 :
	GB/T22105.2-2008
	/ GB/T17141-1997
	HJ.SHC-010
	Inductively coupled plasma-atomic emission spectrometry, US EPA 6010C 2007
pH	GB/T5750.4-2006
	GB/T5750.5-2006
	GB/T5750.5-2006
	GB/T5750.5-2006
	GB/T5750.4-2006
	GB/T 7494-1987
	GB/T5750.12-2006
	GB/T5750.6-2006
	GB/T 5750.6-2006

5

5.1

5-1

		cm			
S1	SUL82313S101	0-20		2019.08.27	E 120.233798823 ° N 31.310528007 °
	SUL82313S102	40-60			
	SUL82313S103	80-100			
S2	SUL82313S201	0-20		2019.08.27	E 120.232839417 ° N 31.31174538 °
	SUL82313S202	40-60			
	SUL82313S203	80-100			
S3	SUL82313S301	0-20		2019.08.27	E 120.231583504 ° N 31.30598117 °
	SUL82313S302	40-60			
	SUL82313S303	80-100			

5-2

	SUL82313S101	SUL82313S102	SUL82313S103	SUL82313S201	SUL82313S202	SUL82313S203 ₃	SUL82313S301	SUL82313S302	SUL82313S303	
pH	7.96	7.74	7.64	8.36	8.33	8.33	7.98	7.88	7.76	
	0.178	0.108	0.128	0.111	0.108	0.095	0.104	0.097	0.106	mg/kg
	19.9	9.42	19.6	18.4	19.8	19.7	18.4	19.9	18.8	mg/kg
	0.19	0.13	0.18	0.18	0.18	0.19	0.18	0.17	0.23	mg/kg
	29	29	33	27	30	29	38	33	41	mg/kg
	79.2	73.0	90.9	85.1	99.3	94.1	98.1	92.5	99.3	mg/kg
	77	26.6	31.6	21.9	23.8	26.8	26.2	29.0	27.9	mg/kg
	77	61	65	63	64	93	88	82	81	mg/kg
	ND	ND	ND	ND	ND	ND	ND	ND	ND	mg/kg
	26	25	30	33	35	25	37	33	29	mg/kg



1

5.2

5-3

m

m

m

	379	405	408	mg/L
	ND	ND	ND	mg/L
	11000	14000	5200	CFU/mL
	ND	ND	ND	mg/L
	ND	ND	ND	mg/L
	19.6	20.2	22.4	mg/L

	GW ₂			:
pH	6.89	6.91	6.90	
	0.05	0.03	0.03	mg/L
	0.025	0.023	0.024	mg/L
	2.38	2.57	2.65	mg/L

	ND	ND	ND	mg/L
	34.7	31.7	30.4	mg/L

GB/T 14848-2017 1 2