

# 2018 年度重点企业土壤和地下水环境 自行监测开展情况报告



报告企业（盖章）：无锡华润上华科技有限公司

二零一八年九月十日

---

1

2018 6      2018 5  
2018 8      2018

2

2.1

2002 7  
2004 3 3  
2004 177

0.25

60000 /

8

2008

3

[2008]1

3 /

2010

3 /

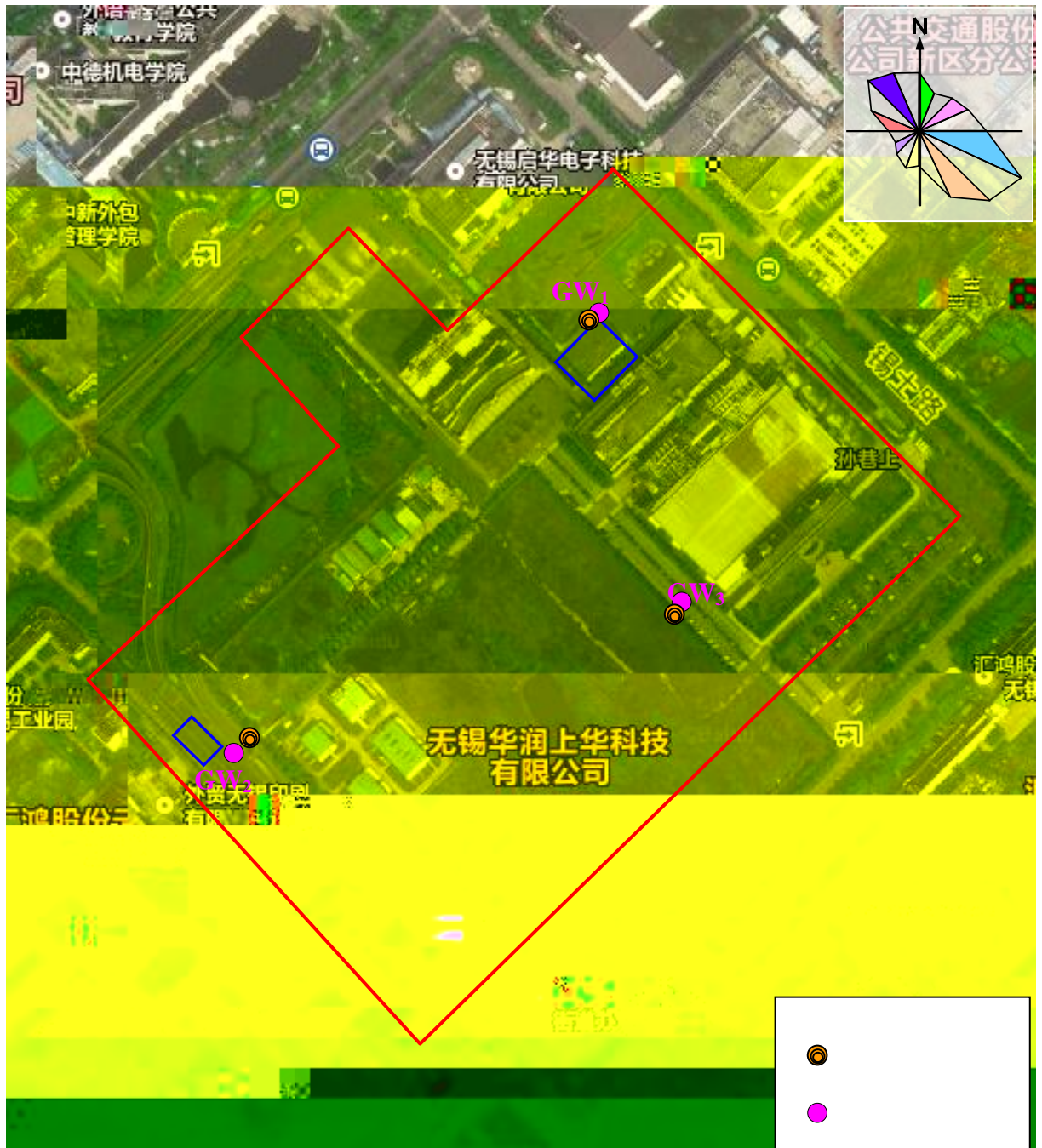
2016 12

2.2









1

---

**4**

**4.1**

2018

EDD36K006570

**4-1**

---

pH	2
	/ /
pH	NY/T 1121.2-2006

---

4.1

2018

5

DB11/T 811

4-2

GB/T14848-1993

4-3

4-2

				/
1	pH	-	-	-
2		10	10	14
3		20	20	20
4		8	9	150
5		600	700	10000
6		3500	5000	10000
7		400	400	1200
8		250	800	2500
9		30	30	500
10		50	80	300

4-3

pH mg/L

1	pH	6.5	8.5	5.5	6.5	8.5	9	<5.5 >9
2		-	-	-	-	-	-	-
3		-	-	-	-	-	-	-
4	NH <sub>3</sub> -N							>1.50
5								>4.80
6	N							

16	As				0.05	>0.05
17						>2.00
18		-	-	-	-	-
19		-	-	-	-	-
20						>400
21		-	-	-	-	-

## 5

### 5.1

#### 5-1

		cm			
T <sub>1</sub>	T <sub>101</sub>	0-20		2018.07.23	E 120.233798823 ° N 31.310528007 °
	T <sub>102</sub>	40-60			
	T <sub>103</sub>	80-100			
T <sub>2</sub>	T <sub>201</sub>	0-20		2018.07.23	E 120.232839417 ° N 31.31174538 °
	T <sub>202</sub>	40-60			
	T <sub>203</sub>	80-100			
T <sub>3</sub>	T <sub>301</sub>	0-20		2018.07.23	E 120.231583504 ° N 31.30598117 °
	T <sub>302</sub>	40-60			
	T <sub>303</sub>	80-100			

#### 5-2

	T <sub>101</sub>	T <sub>102</sub>	T <sub>103</sub>	T <sub>201</sub>	T <sub>202</sub>	T <sub>203</sub>	T <sub>301</sub>	T <sub>302</sub>	T <sub>303</sub>	
pH	7.75	7.84	8.03	7.95	7.94	7.95	7.70	7.76	7.82	
	0.042	0.058	0.018	0.015	0.082	0.019	0.072	0.056	0.050	mg/kg
	16.4	17.0	18.7	17.9	18.0	18.5	14.8	16.2	14.8	mg/kg
	0.15	0.21	0.18	0.13	0.11	0.10	0.12	0.06	0.04	mg/kg
	25.1	28.0	26.8	24.8	24.2	24.4	30.5	28.1	28.5	mg/kg
	71.8	73.3	75.6	74.4	67.8	72.1	71.2	69.3	73.1	mg/kg
	38.0	44.4	43.9	39.1	43.4	34.8	43.0	38.2	37.8	mg/kg
	57.7	76.5	59.5	57.0	56.8	65.0	66.9	63.1	66.7	mg/kg
	ND	ND	ND	ND	ND	ND	ND	ND	ND	mg/kg
	24	27	26	24	24	24	30	28	28	mg/kg

DB11/T 811 /

### 5.2

5-3

	m	m	m				
GW <sub>1</sub>	0.96	0.5	12	20.5		2018.07.24	E 120.233798823 ° N 31.310528007 °
GW <sub>2</sub>	1.43	0.5	12	21.4		2018.07.24	E 120.233798823 ° N 31.310528007 °
GW <sub>3</sub>	1.64	0.5	12	20.1		2018.07.24	E 120.233798823 ° N 31.310528007 °

5-4

	GW <sub>1</sub>	GW <sub>2</sub>	GW <sub>3</sub>	
	11.7	12.2	11.8	m
pH	6.86	7.31	7.30	
	ND	ND	ND	mg/L
	262	161	242	mg/L
	0.10	0.17	0.14	mg/L
	0.038	ND	ND	mg/L
	1.94	5.88	ND	mg/L
	0.22	0.24	0.22	mg/L
	40.0	125	42.2	mg/L
	111	148	83.1	mg/L
	0.6	0.6	0.5	mg/L
	ND	ND	ND	mg/L
	281	341	246	mg/L
	526	580	381	mg/L
	ND	ND	ND	CFU/L
	28000	13000	17000	mg/L
	ND	ND	ND	mg/L
	0.024	ND	ND	mg/L
	0.44	0.28	0.54	mg/L
	33.7	66.6	60.9	mg/L
	25.3	23.3	14.6	mg/L
	129	99.8	99.0	mg/L

GW<sub>1</sub>

GB/T14848-1993

GB/T14848-1993

GB/T14848-1993

GB/T14848-1993

